



KAVYA FIRE ENGINEERING

COOLMAX[®]

Protect Lives. Protect Property. Choose Fire Safety



Branch office & Workshop Address: Noida, Sector- 63A, Village Bahalolpur, Near Hari Singh Public School, Pin Code - 201307

Content

A black and white photograph of a firefighter in full protective gear, including a helmet and a jacket with reflective stripes. The firefighter is holding a fire extinguisher and spraying it towards a fire. In the background, another firefighter is visible, also in gear. The scene is outdoors, and the overall tone is professional and focused.

1. **About Company**
 2. **Fire Detection & Alarm System**
 3. **Fire Ball**
 4. **Fire Hydrants & Sprinkler System**
 5. **Water Mist & Spray System**
 6. **Vehicle Fire Suppression System**
 7. **Transformer & Substation Fire Protection S.**
 8. **Fire Audit & Safety Traning**
 9. **Gas Lekage Detection System**
 10. **Automatic Type Modular**
 11. **Automatic Type Powder Modular**
 12. **Automatic Type Clean Agent Modular**
 13. **Automatic Type Clean Agent Modular SS Body**
 14. **Automatic Type Powder Modular SS Body**
 15. **CNC Machine Fire Suppression System**
 16. **Inpanel Tube Based Fire Suppression System**
 17. **Classification System**
 18. **Technical Specification**
 19. **Kitchen Hood Fire Suppression System**
 20. **Kitchen Suppression System (LPCB, UL, CE)**
 21. **Inroom Modular Based Suppression System**
 22. **Inroom Modular Introduction**
 23. **Inroom Modular Advantages**
 24. **Total Flooding System**
 25. **Total Flooding System Features**
- Our Client List**
Certificates



About Company

KAVYA FIRE ENGINEERING is a premier fire safety solutions provider in India, specializing in comprehensive fire protection systems and services designed to meet the safety needs of diverse industries. Established to offer a wide range of top-notch fire safety solutions, **KAVYA FIRE ENGINEERING** brings years of experience in the design, supply, installation, and maintenance of fire safety equipment, as well as providing tailored solutions for fire prevention, suppression, and detection.

Our commitment to customer satisfaction, safety, and innovation has helped us establish a loyal clientele across various sectors, including industrial, commercial, and residential markets. We pride ourselves on delivering products and services that adhere to the highest international standards, ensuring complete protection for our clients' assets and personnel.





Fire Detection, Alarm and Emergency Notification System

A key aspect of fire protection is to identify the developing fire as soon as possible so that you can alert the building's occupants and fire emergency organizations. This is where a fire detection and alarm system are most effective in protecting your organization.

A fire detection system is an alarm system that assesses and then responds to events reported by various fire detectors. Fire detection systems are permanently installed systems to detect fires at an early stage, warn those affected and quickly inform the relevant emergency service. To be useful, detectors must be coupled with alarms and a notification system.

These detectors are operated either manually or triggered automatically by heat, visible or invisible smoke, or flames. Only the detectors in the immediate vicinity of the fire are activated, sending a report to the fire detection control panel. The inclusion of a notification system will ensure that all required personnel are informed & aware when an incident occurs.





Fireball

The Fire Ball is a device designed to extinguish fire. It consists of a lightweight, rigid foam plastic housing with an abrasion resistant outer shell. The Fire Ball is very easy to use and offers an additional layer of protection as it explodes automatically in the presence of fire. Simply throw the fire ball into the fire and within 3 to 10 seconds of contact with the flame the trigger inside the fireball is activated. Fire Ball is recommended for extinguishing and monitoring the following types of fire:

Class A - combustible materials (wood, paper, fabric, waste)

Class B - flammable liquids (surveillance fire only)

Class C - flammable gas (surveillance fire only)

1. Total weight of the product: 1.5 + - 0.2 kg.
2. Activation time: 3 to 10 seconds with a flame.
3. Effective Extinguishes fires at a distance of up to 2 to 5 m².
4. No false alarms
5. The ball does not activate in the absence of fire
6. Product life is 5 years, during which time no inspection or maintenance is not required
7. Because it activates automatically, no special skills or training are required to use it
8. Does not pollute the environment (safe for humans)



Fire Hydrants and Sprinkler Systems

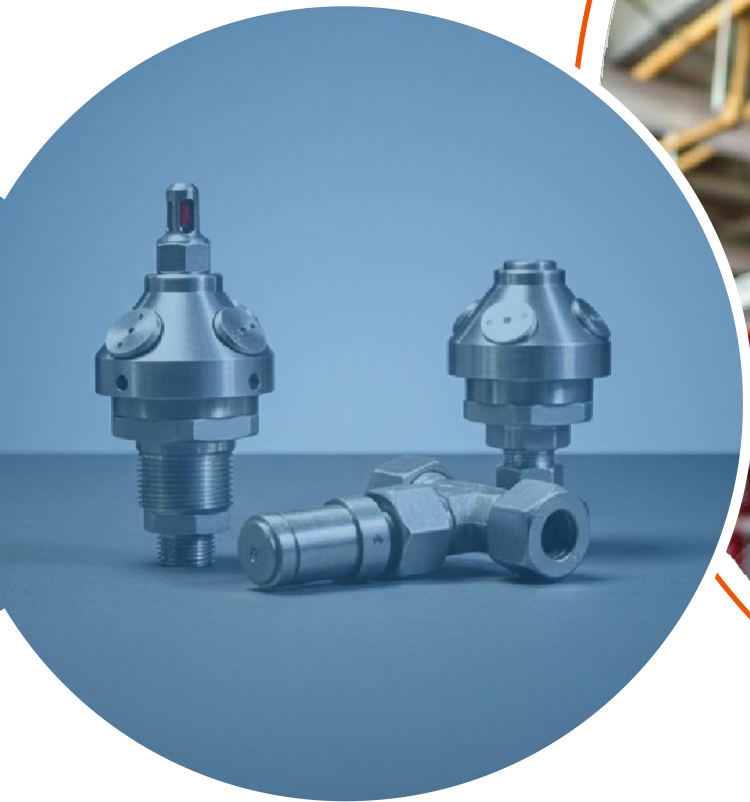


Our Hydrant systems are suitable for locations without compressed air or water supply.

The easy-to-use system includes an integrated pressure tank, a water storage unit and an optional foam supply unit. It can be safely used on electrically triggered fires and is compatible with electronic equipment.

This highly reliable firefighting solution eliminates the problem of concerns such as malfunctioning pipes and worn parts that affect traditional hose systems. While other hydrants run dry and other extinguishers stop working before all flames are extinguished, our hydrant system continues to work.





Water Mist and Spray Systems

Some of K.F.E. revolutionary fire suppression solutions use a water-mist technology system, enabling it to be used safely on electrical fires. With its massive cooling power and increased coverage area, water-mist kills even the largest of fires in minutes, rapidly bringing down the temperature to below combustible levels, and cutting off the oxygen supply completely.

100% green, Water-mist causes no damage to equipment or the Earth. Making it absolutely safe to use on electronics, sensitive equipment and above all else human lives.



Vehicle Suppression Systems

K.F.E. offers a complete range of extinguishing systems for heavy vehicles and buses.

Fires in vehicles often take hold very quickly and are hard to extinguish with a handheld extinguisher. A correctly dimensioned extinguishing system offers you fast, effective protection that limits the consequences of a fire.

Our Vehicle fire suppression systems come in all recognized options, ranging from Forex, Powder and Water mist.



Transformer/Substation Generator Fire Protection Systems

As all round supplier of fire suppression systems, K.F.E. offers custom fire detection and suppression systems for substations and transformers. Every fire safety solution offered by K.F.E. is carefully reviewed based upon quality, durability, effectiveness, consequential damages, environment, personal safety, and costs.

For transformers and substations of high rated power and voltages (above 120 kV), it is recommended to provide a fire protection system that uses a water spray fixed system. These waters based and mist protection systems include fire pumps, water spray fixed system/nozzles, valves, specialized valve components, and piping. This, coupled with fire alarm detection system, will ensure that you and your high-powered critical equipment are safe and protected.

Electric Substations are considered especially high risk as they contain a number of the features that represent particular fire risks, including:

- The equipment in substations operates at relatively high energy levels
- Some substation equipment contains significant fuel loads
- Large cable banks contain significant masses of flammable material
- Substations are generally unattended



Fire Audit and Safety Training

K.F.E. specializes in not only supplying the very best in firefighting equipment but also offers a comprehensive audit, maintenance, and safety training program. From inspecting, to testing, to preserving; K.F.E. is equipped to maintain all your fire equipment. We are able to service and refill your portable hand-operated fire extinguishers, as well as test your specialized fire and alarm systems for deficiencies and effectiveness. You can count on our trained technicians to ensure that your fire safety Products are in working order and inspection ready status as quickly and cost effectively as possible.

Ensure that you and your employees are fully prepared with our fire safety training module. Designed to teach you preventive measures that will eliminate or minimize causes of fire or fire hazards in the workplace, our safety program teaches you proper emergency and evacuation procedures in the event of a fire.

Our services include:

1. Planning for inspection, maintenance, and testing of existing system
2. Knowing about the Fire - provide training on the product to staff and employees
3. Help develop an escape plan in case of fire emergency





GAS LEAKAGE DETECTION SYSTEM

LPG / CNG Gas Monitor System

H2s Gas Detector Controller

LPG Gas Monitor System

Natural Gas Detector Controller

Gas Monitor Use Concentration



AUTOMATIC TYPE MODULAR FIRE EXTINGUISHER SERIES

KAVYA FIRE ENGINEERING which keeps guard and extinguishes fire quickly and efficiently. In the event of fire, COOLMAX Modular type extinguishers activate automatically, spraying the extinguishing agent with maximum force, ensuring that the fire is brought under control rapidly and efficiently

Ideal Use



Switch gears



Office



Sensitive data storage



Aircraft's



Boats



Laboratories

AUTOMATIC TYPE POWDER MODULAR EXTINGUISHER

FEATURES

- Hydraulically tested as per standard and passed through anti-corrosive treatment
- An Automatic Detection and Suppression System together in a single unit quite unlike any other system available in the market
- Automatic round-the-clock protection
- Automatic operation, hence no human involvement, reducing the chances of injury and accidents to virtually zero.
- Proves to be the most economical when compared to other systems
- Reusable cylinder as it is not based on aerosol technology. Hence, most economical
- Non-Freezing & long lasting
- Provides securities in case of emergencies and power failure without power backup
- Rechargeable and easy to service
- Extinguishing medium is Mono Ammonium Phosphate powder



Class A



Class B



Class C



Electrical

PERFORMANCE DATA

MODEL (MAP 50% POWDER)	CKFERQ -2-50%	CKFERQ -5-50%	CKFERQ -10-50%	CKFERQ -15-50%
MODEL (MAP 90% POWDER)*	CKFERQ -2-90%	CKFERQ -5-90%	CKFERQ -10-90%	CKFERQ -15-90%
Capacity	2 kg	5 kg	10 kg	15 kg
Design	Ceiling Mounted	Ceiling Mounted	Ceiling Mounted	Ceiling Mounted
Height (Approx)	380 mm	375 mm	405 mm	425 mm
Diameter (Approx)	150 ± 10 mm	230 ± 10 mm	300 ± 10 mm	400 ± 10 mm
Average Discharge time	4-5 Sec	6-8 Sec	10-15 Sec	15-20 Sec
Hanging height above risk	1.5 Mtr	1.5 to 2 Mtr	1.75 to 2.25 Mtr	2 to 3 Mtr
Area Protection	1 to 1.5 m ²	2 to 2.5 m ²	4 to 5 m ²	5 to 6 m ²
Average % Discharge	99%	99%	99%	99%
Operating Temperature	-30 °C to +60 °C			
Service / Test Pressure	15 / 35 bar			
Expelling Agent	Nitrogen (UHP grade)			
Empty Weight (Approx.)	1.5 / 3.5 / 3.8 kg	2.6 / 7.6 / 8 kg	4.1 / 14.1 / 14.5 kg	6.4 / 21.4 / 22 kg
Mounting Bracket	Ceiling mounting stand			
Volume Coverage (Approx)	3m ³	7m ³	12m ³	17m ³

AUTOMATIC TYPE CLEAN AGENT MODULAR EXTINGUISHER

FEATURES

- UL Listed FK-5-1-12 gas is compliant with
- Unique Gauge Testing System (UGTS) mechanism
- Internally Epoxy Polyester (EP) and Externally Pure Polyester (PP) powder coated (UV Resistant)
- Anti-corrosive treatment: Semi Automatic Seven tank Hot dipping Phosphate treatment Process
- Helium Leak Detection tested for leakage, leak rate up to 1×10^{-8} mbar.l/sec.
- Provides security in case of emergencies and power failure without power backup Automatic and reliable security round the clock
- Easy to maintain, recharge & service
- Welding Procedure (WPS) approved by TPI with 6G



Class A



Class B



Class C



Electrical



PERFORMANCE DATA

MODEL (RQ SERIES)*	CKFERQ -2	CKFERQ -5	CKFERQ -10	CKFERQ -15
MODEL (HQ SERIES)	CKFERQ-FK-5 -1-12	CKFERQ-FK-5 -1-12	CKFERQ-FK-5 -1-12	CKFERQ-FK-5 -1-12
Capacity	2 kg	5 kg	10 kg	15 kg
Design	Ceiling Mounted	Ceiling Mounted	Ceiling Mounted	Ceiling Mounted
Height (Approx)	380 mm	375 mm	405 mm	425 mm
Diameter (Approx)	150 ± 10 mm	230 ± 10 mm	300 ± 10 mm	400 ± 10 mm
Average Discharge time	4-5 Sec	6-8 Sec	10-15 Sec	15-20 Sec
Hanging height above risk	1.5 Mtr	1.5 to 2 Mtr	1.75 to 2.25 Mtr	2 to 3 Mtr
Area Protection	1 to 1.5 m ²	2 to 2.5 m ²	4 to 5 m ²	5 to 6 m ²
Average % Discharge	99%	99%	99%	99%
Operating Temperature	-30 °C to +60 °C			
Service / Test Pressure	15 / 35 bar			
Expelling Agent	Nitrogen (UHP grade)			
Empty / Full / Shipping Wt.(Approx)	1.56 / 3.56 / 3.75 kg	2.64 / 7.64 / 7.8 kg	4.11 / 14.11 / 14.5 kg	6.4 / 21.4 / 22 kg
Mounting Bracket	Ceiling mounting stand			
Approvals	CE			
Volume Coverage (Approx)	2.5m ³	6m ³	10m ³	15m ³

* RQ Series available with other Clean Agent gas



FK-5 -1-12
Clean Agent Approvals

AUTOMATIC TYPE CLEAN AGENT MODULAR EXTINGUISHER SS FINISH

FEATURES

- Hydraulically tested as per standard and passed through anti-corrosive treatment
- An Automatic Detection and Suppression System together in a single unit quite unlike any other system available in the market CE marked, brass chrome plated valve with Controllable discharge mechanism and Large loop Stainless steel Pull pin
- Automatic operation, hence no human involvement, reducing the chances of injury and accidents to virtually zero
- Proves to be the most economical when compared to other systems
- Reusable cylinder as it is not based on aerosol technology. Hence, most economical
- Non-Freezing & long lasting
- Provides securities in case of emergencies and power failure without power backup
- Rechargeable and easy to service
- Extinguishing medium is Clean agent HFC236fa/FE-36/FK 5-1-12.



Class A



Class B



Class C



Electrical

PERFORMANCE DATA

MODEL (RQ SERIES)	CKFERQ -2FK	CKFERQ -5FK	CKFERQ -10FK
Capacity/Filled powder	2kg	5kg	10kg
Design	Ceiling Mounted	Ceiling Mounted	Ceiling Mounted
Height (Approx)	370 mm Approx.	380 mm Approx.	405 mm Approx.
Diameter (Approx)	150 ± 10 mm	230 ± 10 mm	300 ± 10 mm
Average Discharge time	4 -5 sec approx	6-8 sec approx	10-15 sec approx
Hanging height above risk	1.5 Mtr	1.5 - 2 Mtr	1.75-2.25 Mtr
Area protection	1 -1.5 m2	2 - 2.5 m2	4-5 m2
Volume Protection	2.5 m3 Approx.	6 m3 Approx	10 m3 Approx.
Average % of Discharge	95%	95%	95%
Operating temperature	30°C to +60°C		
Service/Test pressure	15/35 bar		
Expelling Agent	Nitrogen UHP grade		
Empty / Full / Shipping Wt. (Approx)	1.56/3.56/3.75 Kg	2.64/7.64/7.8 Kg	4.11/14.11/14.5 Kg
Mounting bracket	Ceiling mounted stand	Ceiling mounted stand	Ceiling mounted stand

AUTOMATIC TYPE POWDER MODULAR EXTINGUISHER SS FINISH

FEATURES

- Hydraulically tested as per standard and passed through anti-corrosive treatment
- An Automatic Detection and Suppression System together in a single unit quite unlike any other system available in the market
- Automatic round-the-clock protection
- Automatic operation, hence no human involvement, reducing the chances of injury and accidents to virtually zero
- Proves to be the most economical when compared to other systems
- Reusable cylinder as it is not based on aerosol technology. Hence, most economical
- Non-Freezing & long lasting
- Provides securities in case of emergencies and power failure without power backup
- Rechargeable and easy to service
- Extinguishing medium is Mono Ammonium Phosphate powder



Class A



Class B



Class C



Electrical

PERFORMANCE DATA

MODEL (MAP 50% POWDER)	CKFERQ -2 -50%	CKFERQ - 5 -50%	CKFERQ - 10 -50%
MODEL (MAP 90% POWDER)	CKFERQ -2 -90%	CKFERQ - 5 -90%	CKFERQ - 10 -90%
Capacity/Filled powder	2kg	5kg	10kg
Design	Ceiling Mounted	Ceiling Mounted	Ceiling Mounted
Height (Approx)	370 mm Approx.	380 mm Approx.	405 mm Approx.
Diameter (Approx)	150 ± 10 mm	230 ± 10 mm	300 ± 10 mm
Average Discharge time	4-5 sec	6-8 sec	10-15 sec
Hanging height above risk	1.5 Mtr	1.5-2 Mtr	1.75-2.25 Mtr
Area protection	1 to 1.5 m ²	2 to 2.5 m ²	4 to 5 m ²
Volume Protection	3m ³ Approx.	7m ³ Approx	12m ³ Approx.
Average percentage of Discharge	95%	95%	95%
Operating Temperature	30°C to +60°C		
Service/Test pressure	15/35 bar		
Expelling Agent	Nitrogen UHP grade		
Empty/Full/ Shipping Wt.(Approx)	1.5/3.5/3.8 kg	2.6/7.6/8 Kg	4.1/14.1/14.5 Kg
Mounting bracket	Ceiling mounted stand	Ceiling mounted stand	Ceiling mounted stand



CNC MACHINE FIRE SUPPRESSION SYSTEM

Ideal Use



Electrical Panels



Server Racks



CNC Machine



Dry Transformer

IN-PANEL- TUBE BASED SUPPRESSION SYSTEM

THE SOLUTION

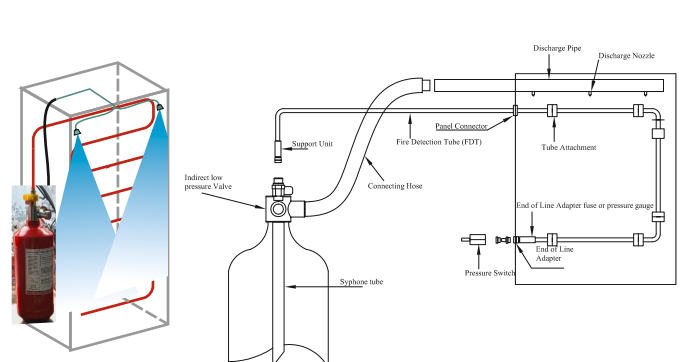
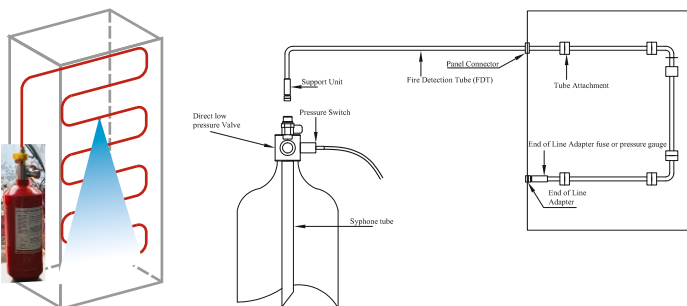
COOLMAX In-Panel Tube Based Suppression System CKFE take the fire detection and suppression inside of the hazard, a growing fire can be caught quickly, preventing the spread of fire to other parts of the building that would require firefighters or water sprinklers extinguish.

The CKFE system use UL listed continues linear sensor tube that reliably detects and actuates release of the extinguishing agent using pneumatic technology. It is more flexible, space efficient and cost effective.

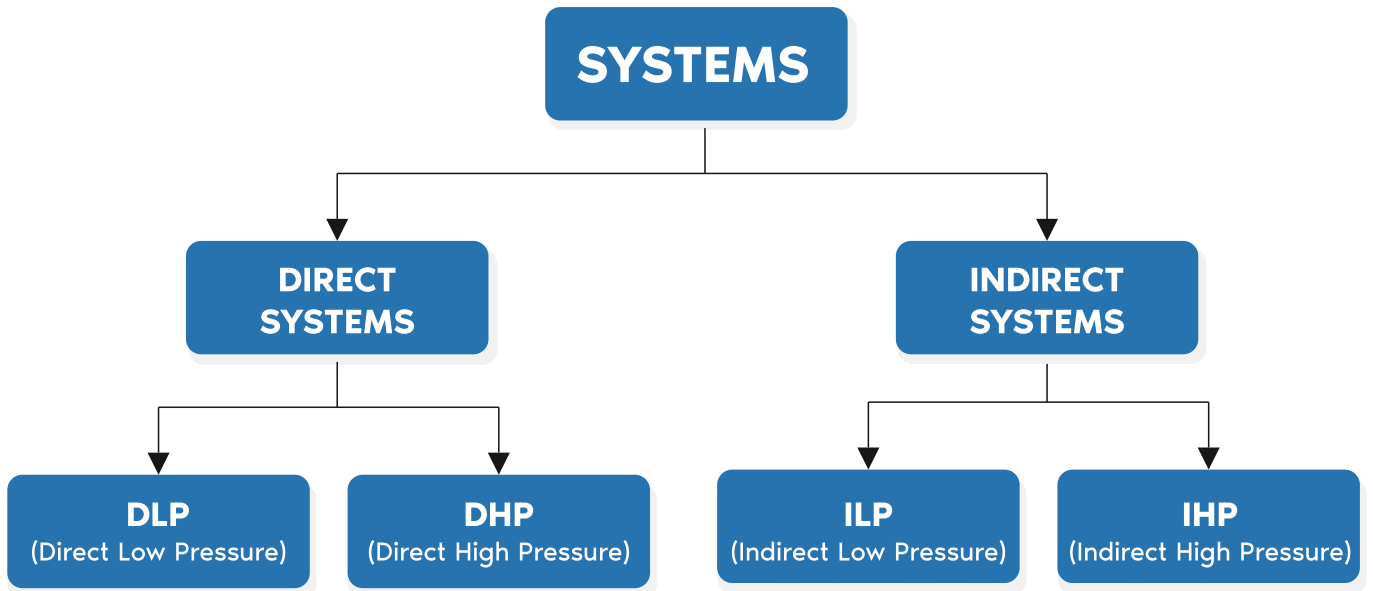


FEATURES

- Self-actuated & No external power source required.
- Suitable for all types of fire viz Class A, B, C & Electrically started Fires
- Clean Agent gas in environment friendly
- Easy to maintain, operational readiness, expansion flexibility. 100% effective
- Available in High pressure (CO₂) & Low pressure (Powder, Foam, Clean Agent gas FK-5-1-12 (Novec1230), HFC227ea (FM200) , 24 x 7 - Operation
- Easy to maintain & Re-installation, Re-filling.



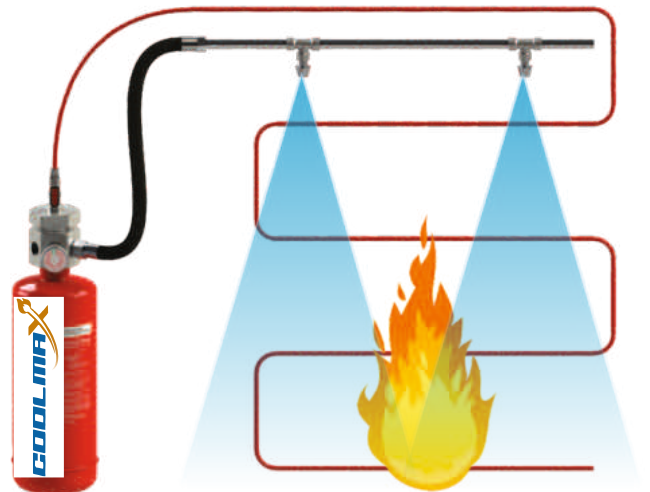
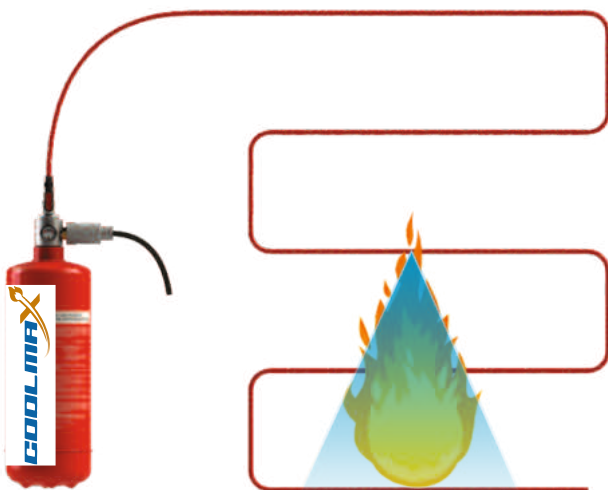
CLASSIFICATION



Available in Novec1230 (FK-5-1-12), FM-200 (HFC227ea) CO2 gas , MAP 90 ABC Powder

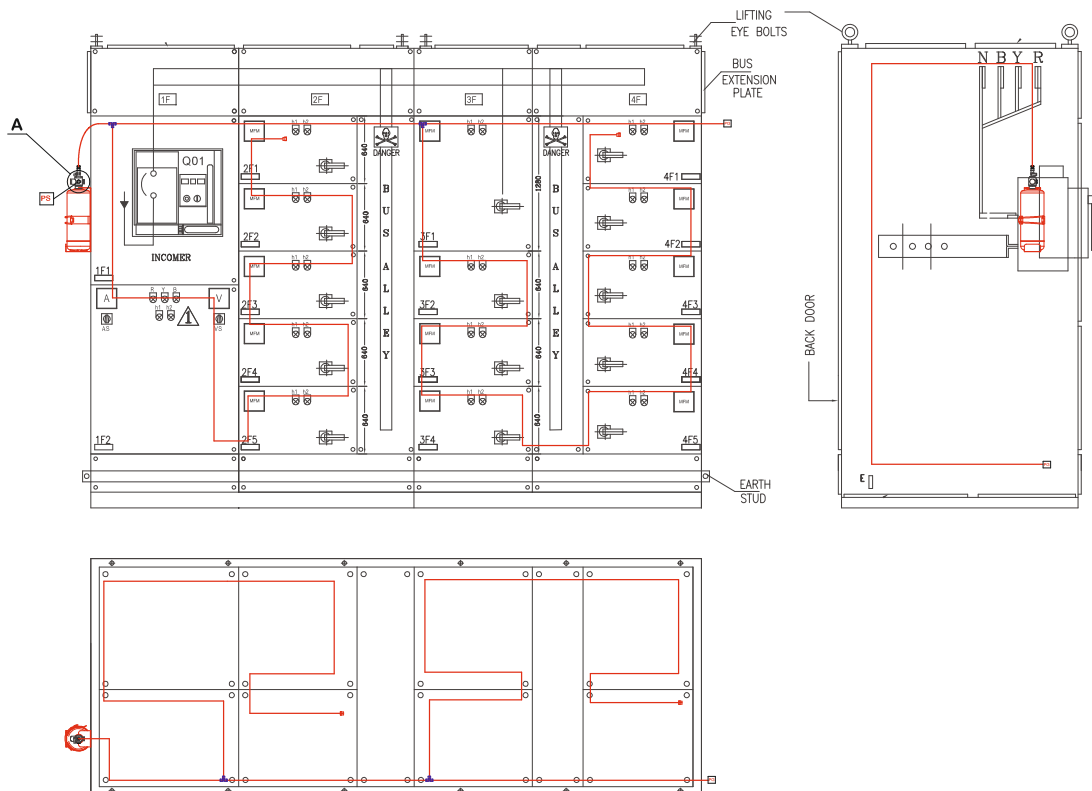
- The direct system utilizes Heat Sensing Tube as both fire sensing & suppression of fire by delivering the agent.
- The nearest surface of Heat Sensing Tube bursts due to heating & it forms effective discharge nozzle
- Due to which pressure drops in Heat Sensing Tube & entire content of cylinder discharges.

- The Indirect system utilizes Heat Sensing Tube as fire sensing ONLY Suppression of fire is delivered via copper, SS or Braided pipe.
- The nearest surface of Heat Sensing Tube bursts due to heating it actuates the valve & agent discharges through strategically placed nozzles within protected enclosure



Technical Specification

Direct System		Indirect System	
Extinguishing agents	Clean Agents - FK-5-1-12 (Novec1230) , HFC227ea (FM200) , Powder , Foam , Co2	Extinguishing agents	Clean Agents - FK-5-1-12 (Novec1230) , HFC227ea (FM200) Powder , Foam , Co2
Capacity for Low pressure (Kgs)	1 kg , 2 kg , 4 kg , 6 kg , 9 kg ,	Capacity for Low pressure (Kgs)	2 kg , 4 kg , 6 kg , 9 kg ,
Capacity for low pressure in pounds (LBS)	2.5 LBS , 5 LBS , 10 LBS	Capacity for low pressure in pounds (LBS)	5 LBS , 10 LBS
Capacity for Co2	2 kg , 4.5 kg , 6.5 kg , 9 kg	Capacity for Co2	4.5 kg , 6.5 kg , 9 kg
Cylinder	CE/PESO	Cylinder	CE/PESO
Discharge Valve (DLP)	CE	Discharge Valve (LP)	CE
Clean Agent gas	UL listed	Clean Agent gas	UL listed
Design standard for clean agent	NFPA2001:2022	Design standard for clean agent	NFPA2001:2022
Design standard for Co2	NFPA 12 : 2022	Design standard for Co2	NFPA 12 : 2022
Fire Detection Tube	UL listed	Fire Detection Tube	UL listed
End line adapter	Standard-Threaded	End line adapter	Standard-Threaded
T connector , End line plug , Tube to tube connector , slip on , spring top etc	As per EN standard	T connector , End line plug , Tube to tube connector , slip on , spring top etc	As per EN standard
Operating temperature	(-) 30 Deg C to (+) 60 Deg C	Nozzle Kit	As per standard to achieve discharge time as per NFPA & UL
		Operating temperature	(-) 30 Deg C to (+) 60 Deg C





KITCHEN HOOD - TUBE & LHS CABLE BASED SUPPRESSION SYSTEM

Kitchens tend to use large quantities of hot fat and oil for the preparation of food. These fats and oils pose a particularly high fire risk. Most fires in kitchens start in deep fryers, frying pans and grilling plates, Burners with defective overheating protection. Fat self-ignites at a temperature of 350°C. which is easily reached, and fat fires tend to spread very quickly.

Ideal Use



Restaurant



Home kitchen



Canteen

The Tube type extinguishing system has been specifically designed for use in catering/commercial kitchens. The fire detection elements respond the moment the first small flame occurs, and the fire is promptly extinguished before serious damage can occur. This system works in two ways, it is sprayed through fine nozzles onto the equipment forming a blocking layer over the fat or oil so that the fire is starved of oxygen. Simultaneously, the fat is cooled down by the water contained in the agent, so preventing self-ignition. Thus this system as effective and reliable a Conventional extinguishers. Preventing renewed self-ignition

FEATURES

- Flexible protection
- Safety
- The pneumatic triggering
- Minimizes service stoppage during repairs
- Help prevent personnel injury



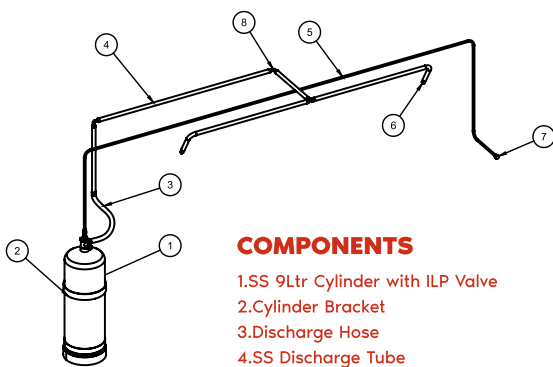
LPS 1223:Issue 2.3
Cert.No. 724b



LISTED
300



LINE DIAGRAM



COMPONENTS

- 1.SS 9Ltr Cylinder with ILP Valve
- 2.Cylinder Bracket
- 3.Discharge Hose
- 4.SS Discharge Tube
- 5.Heat Sensing Tube
- 6.Discharge Nozzle
- 7.Manual Release

SPECIFICATION

Extinguishing Agent	Class F
Propellant	Nitrogen
Volume of Extinguishing Agent	9 Ltr to 25 Ltr
Tube Pressure	16 Bar
Burst Temperature	175°C
Cylinder Pressure	16 Bar
Working Temperature	-20° C to +50°C
Cylinder Volume	12 Ltr
Weight	13 KG



INROOM- MODULAR BASED SUPPRESSION SYSTEM

Ideal Use



Home



Office



Buildings



Warehouses



Farms



Wood working area

INTRODUCTION

Research & analysis demands specialised fire suppression technology for unique infrastructures, business buildings. CKFERQ neither demand any structural modification nor consumption of floor space as this system is mounted directly on the ceilings of space.

This system is designed with smart & sensitive elements like Smoke & heat detectors and also this minimizes the false activation by Programmed control panel.

This system comprises the following components.

SYSTEM DESCRIPTION

The ceiling mounted modular container contains extinguishing agent with its rated capacity. This container is fitted with specially designed nozzle which can protect area with optimum quantity of agent. The modular unit is attached with master control panel & panel is again attached with smoke & heat detectors.

Thus, even a smallest fire can be detected by detectors & this detectors will convey signal to control panel & panel will communicate with modular

So, panel communicates two-way with Modular as well as detectors to ensure complete operation.



Class A



Class B



Class C



Electrical

OPERATION

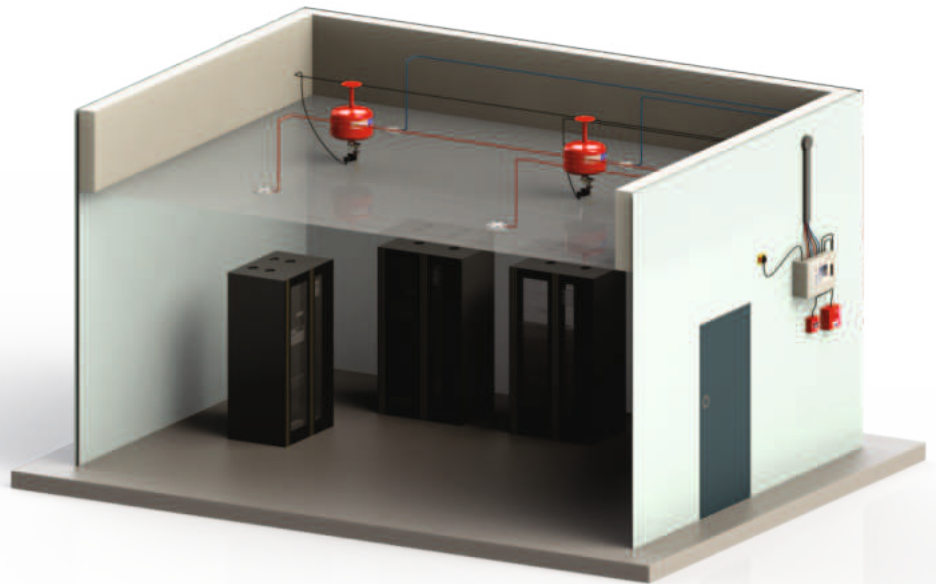
- The detectors will detect smoke (Smoke detectors) or temperature (Heat detectors) or both and then it will send electrical signal to control panel
- To decrease possibility of false alarm & activation the cross zonal function comes in to action. In this case control panel will act only when two or more detectors of same zone will detect the fire & send electrical signal to panel.
- Once the control panel is activated, it will start strobe light & siren. This will start for some specific time to allow to evacuate the room.
- And after some time the agent will start to discharge from nozzle with signal from relay module within specific time and the total area will be flooded
- This system is also provided with manual control switch with which whole system can be activated (or deactivated) manually if required

ADVANTAGES

- This system can be installed directly to any environment on ceiling without any drastic modification in structures
- Since the system is installed on ceiling it is unobstructive to man & material & it contains approximately no space on floor
- It can be installed to any site which is impracticable for future suppression or flooding system installation
- Cost-effective, No any bulk installation & flexible.
- As in flooding system this system doesn't require any extra room / floor for storage of extinguishing agent containers
- 24x7 protection & programmed operation

COMPONENTS

1. Rated capacity extinguisher with solenoid operative valve
2. Smoke detector
3. Heat detector
4. Master control panel
5. Manual Release (or Abort) switch
6. Hooter with strobe light
7. Relay module



PERFORMANCE DATA

MODEL	CKFERQ -2-CA	CKFERQ -5-CA	CKFERQ -10-CA	CKFERQ -15-CA	CKFERQ -2-DCP	CKFERQ -5-DCP	CKFERQ -10-DCP	CKFERQ -15-DCP
Content (Agent)	UL Clean agent (FK- 5-1-12 / HFC 227ea / FM 200)				MAP-50% / MAP-90% / MAP-90% UL Listed Powder			
Capacity	2 kg	5 kg	10 kg	15 kg	2 kg	5 kg	10 kg	15 kg
Design	Ceiling Mounted							
Dimensional Height (Approx)	380 mm	375 mm	405 mm	425 mm	380 mm	375 mm	405 mm	425 mm
Diameter (Approx)	150 ± 10 mm	230 ± 10 mm	300 ± 10 mm	400 ± 10 mm	150 ± 10 mm	230 ± 10 mm	300 ± 10 mm	400 ± 10 mm
Average Discharge time	7-9 Sec	10-12 Sec	14-16 Sec	18-20 Sec	10-12 Sec	16-18 Sec	20-22 Sec	25-28 Sec
Floor to nozzle Height	1.5 Mtr	2.0 Mtr	2.0 Mtr	2.5 Mtr	1.5 Mtr	2.0 Mtr	2.0 Mtr	2.5 Mtr
Average % Discharge	99%	99%	99%	99%	99%	99%	99%	99%
Operating Temperature	-30 °C to +60 °C							
Service / Test Pressure	15 / 35 bar							
Expelling Agent	Nitrogen (UHP grade)							
Empty / Full Weight (Approx.)	1.56 / 3.56 kg	2.64 / 7.64 kg	4.11 / 14.11 kg	6.4 / 21.4 kg	1.56 / 3.56 kg	2.64 / 7.64 kg	4.11 / 14.11 kg	6.4 / 21.4 kg
Mounting Bracket	Ceiling mounting stand							



TOTAL FLOODING SYSTEM

COOLMAX is a fixed suppression system which is arranged to automatically discharge a predetermined concentration of agent into an enclosed space for the purpose of fire extinguishment or control. Each system is custom engineered to quickly suppress fires while eliminating agent cleanup and minimizing the downtime that can be associated with other agent types.



FEATURES

- Safe for electrical/electronic equipment.
- Environmental Friendliness
- 24X7 protection with design Flexibility
- Zero or minimum Downtime/Cleanup
- Wide acceptance

WHAT ARE THE VARIOUS TYPES OF FIRE SUPPRESSION SYSTEMS AVAILABLE TODAY?

Chemical Clean Agent gases – Novec-1230 (FK 5112), FM-200 (HFC-227ea), Fire Protection Fluid and others, all of which offer fast-acting, and most importantly, people-safe fire-suppressing solutions.

In the current scenario/field of fire suppression, Novec-1230 (Generic name: FK 5112) gas is the most recent generation of gas-based chemical extinguishing systems, with a variety of distinctive features and benefits. Novec-1230 is based on a long-term, sustainable technology with one of the highest safety margins and offers swift and reliable extinguishment with minimal environmental impact, particularly on global warming.

It works by completely flooding the area, and extinguishing the flames in a matter of seconds. It is appropriate for the dangers of classes A, B, and C. COOLMAX KFE system is completely tailored to the unique features of the agent, resulting in the most dependable and cost-effective solutions.

Inert Gases – Include nitrogen, argon and CO₂, or a combination of two or more, and reduce oxygen levels to a point where combustion cannot be sustained.

Co₂ Systems – Provide a heavy blanket of gas that reduces the oxygen level to a point where combustion cannot occur.

The system is designed as per NFPA standard.

CERTIFICATION

Certifications available Vds/FM/UL (as per Client Requirement)



OUR CLIENT LIST



amazon



AMITY UNIVERSITY



ELANTE®
CHANDIGARH
THE BEAUTIFULLY SMART MALL



ELCOME™
INTEGRATED SYSTEMS



GINGER
A TATA Enterprise

AMBIENCE
MALL

SINCE 1976

Sindhi Sweets

Blending Sweetness With Purity

BESTECH
SQUARE MALL



VR
PUNJAB

ZARA

Certificate of Registration

KAVYA FIRE ENGINEERING (CoolMax)

KH NO. 46/17, HOUSE NO 552, PRASANT ENCLAVE, BAPROLA VIHAR,
SOUTH WEST DELHI, DELHI-110043, INDIA

has been assessed and Certified by Toris Management Pvt. Ltd.
as meeting the requirements of:

ISO 9001:2015

Quality Management System

For the following scope of activities:

MANUFACTURING AND TRADING FIRE/HEAT DETECTION TUBE, AUTOMATIC FIRE.
SUPPRESSION SYSTEM, AUTOMATIC KITCHEN FIRE SUPPRESSION SYSTEM, AUTOMATIC
VEHICLE FIRE SUPPRESSION SYSTEM, AUTOMATIC TOTAL ROOM FLOODING
SYSTEM, ILP VALVE, DLP VALVE, CO2 DHP VALVE & IHP VALVE, ALL TYPE FIRE
EXTINGUISHER SUPPLY & REFILLING & CO2 FLOODING SYSTEM

Issue No : 01

Date of Certification: 09 September 2025

1st Surveillance Due: 08 September 2026

Revision No () : NA

2nd Surveillance Due: 08 September 2027

Certificate Expiry: 08 September 2028

(subject to the company maintaining its system to the
required standard)

Certificate No:- 0909Q109325

To Verify this Certificate please visit at www.torismanagement.com



[Signature]
Authorised Signatory

Validity of the certificate is subject to successful completion of surveillance audit on or before due date (in case
surveillance audit is not allowed to be conducted, this certificate shall be suspended/withdrawal). *This
Certificate of Registration remains the Property of Toris Management Pvt. Ltd. and
shall be returned immediately upon request

Plot No. (26B) - Prem Nagar Street, Uttam Nagar, New Delhi-110059 India

Email: info@torismanagement.com, Website: www.torismanagement.com

Certificate of Compliance



In Compliance with The Applicable Essential Requirements of industrial sensing Equipments Regulation Directive 305/2011/EC

Certificate No.: CE-9041T

COMPANY NAME :- **KAVYA FIRE ENGINEERING**
REGD. ADDRESS :- **H NO 4617, HOUSE NO 552, PRASANT ENCLAVE,
BAPROLA VIHAR, SOUTH WEST DELHI, 110043, INDIA**
PRODUCTS :- **MANUFACTURING AND TRADING FIRE/HEAT DETECTION TUBE, AUTOMATIC FIRE.
SUPPRESSION SYSTEM, AUTOMATIC KITCHEN FIRE SUPPRESSION SYSTEM,
AUTOMATIC VEHICLE FIRE SUPPRESSION SYSTEM, AUTOMATIC TOTAL ROOM
FLOODING SYSTEM, ILP VALVE, DLP VALVE, CO2 DHP VALVE & IHP VALVE,
ALLTYPE FIRE EXTINGUISHER SUPPLY & REFILLING & CO2 FLOODING SYSTEM**
BRAND NAME :- **CoolMax**

The Certificate body has performed an audit of the above product quality system covering the design, manufacture and final inspection of the certified product. The quality system has been assessed, approved and is subject to continuous surveillance according to **Directive 305/2011/EC**

This certificate is issued under the following conditions:

1. It applies only to the quality system maintained in the manufacture of above referenced models and it does not substitute the design or type-examination procedures, if requested.
2. The certificate remains valid until the manufacturing conditions with applicable CE requirements or the quality systems are changed.
3. The certificate validity is conditioned by positive results or surveillance audits.
4. After fulfilling the relevant Standard testing performance, the manufacturer shall affix to each device, of the referenced models
5. The CE mark as shown above can be used, under the responsibility of the manufacturer, after completion of an EC Declaration of conformity and compliance with all relevant EC Directives. The statement is based on a single evaluation of one sample of above-mentioned product. It does not imply an assessment of the whole production.

Validity of this certificate can be verified at www.ukglobal.uk/Verify

Date of Certification

09th Sep. 2025

1st Surveillance Audit

08th Sep. 2026

2nd Surveillance Audit

08th Sep. 2027

Certificate Expiry (subject to the company maintaining its

08th Sep. 2028

system to the required standard)

A handwritten signature in blue ink, appearing to read 'H. Chaudhary', written over a faint circular watermark.

Authorised Signatory



This certificate is the property of UK Global Certification & Inspection Limited and shall be returned immediately on request.

2nd Floor College House, 17 King Edwards Road, Ruislip, London, HA 47 AE, United Kingdom

Website:- www.ukglobal.uk, enquiries@ukglobal.uk

Company No. 12654562

Certificate of Compliance



This is to certify that the

Fire detection and alarm systems
Part 14: Design, installation, commissioning and service of fire detection
and fire alarm systems in and around buildings
of

KAVYA FIRE ENGINEERING

at

H NO 4617, HOUSE NO 552, PRASANT ENCLAVE, BAPROLA VIHAR,
SOUTH WEST DELHI, 110043, INDIA

has been independently assessed and is
compliant with the requirements of:

ISO 7240-14:2020

(Brand Name:- CoolMax)

For the following scope of activities:

MANUFACTURING AND TRADING FIRE/HEAT DETECTION TUBE, AUTOMATIC FIRE SUPPRESSION SYSTEM, AUTOMATIC KITCHEN FIRE SUPPRESSION SYSTEM, AUTOMATIC VEHICLE FIRE SUPPRESSION SYSTEM, AUTOMATIC TOTAL ROOM FLOODING SYSTEM, ILP VALVE, DLP VALVE, CO2 DHP VALVE & IHP VALVE, ALLTYPE FIRE EXTINGUISHER SUPPLY & REFILLING & CO2 FLOODING SYSTEM

This certificate is issued under the following conditions:

- It applies only to the quality system maintained in the manufacture of above referenced scope / activities.
- The certificate remains valid until the manufacturing conditions or the quality systems are changed and is subject to continuous surveillance according to the FDS Guidelines
- The certificate validity is conditioned by positive results or surveillance audits

Certificate Number: UQ-909T02

Validity of this certificate can be verified at www.ukglobal.uk/Verify

Date of Certification

09th Sep. 2025

1st Surveillance Audit

08th Sep. 2026

2nd Surveillance Audit

08th Sep. 2027

Certificate Expiry (subject to the company maintaining its system to the required standard)

08th Sep. 2028

Authorised Signatory



This certificate is the property of UK Global Certification & Inspection Limited and shall be returned immediately on request.

2nd Floor College House, 17 King Edwards Road, Ruislip, London, HA 47 AE, United Kingdom

Website:- www.ukglobal.uk, enquiries@ukglobal.uk

Company No. 12654562



Thank You



KAVYA FIRE ENGINEERING

An Iso 9001:2015 Certified Company

GSTIN ADDRESS KH NO 46/17 HOUSE NO 552

PRASANT ENCLAVE, BAROLA VIHAR - 110043

Branch office & Workshop address: Noida, Sector- 63A,

Village Bahalolpur, Near Hari Singh Public School, Pin Code - 201307

**Email : coolmax.kavya@gmail.com
sunilsr9555@gmail.com**

**Website : www.kavyacoolmax.in
Phone no.: 8287579949**